

# SCHRADE WALDEN Cutlery

ESTABLISHED 1904

# Give Gifts of QUALITY

CUSTOM MADE IN THE U.S.A.

by one of America's oldest cutlery manufacturers

The hand craftsmanship that goes into the manufacture of Schrade Walden knives limits the production — so — please allow as much time as possible for orders to be shipped.

1972 LINE  
Prices Apply On  
Orders Received  
Before  
June 30, 1972

No. 340T  
3-5/16" closed.



No. 80T  
4" closed.



No. 1650T  
9 1/2" overall, 5 1/4" blade.



Genuine Saw Cut Staglon® Handles Original OLDTIMER® Knives

No. 1080T  
2 3/4" closed.



No. 250T  
5 1/4" closed.  
With Sheath



**SORRY -  
NO  
IMPRINT**

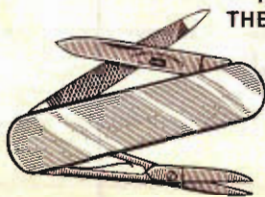
No. 150T  
10 1/2" long overall



No. 1250T  
5 1/4" closed.  
Lock Blade, With Sheath



No. 876RB  
THE BANKER



A slim sturdy gentleman's pocket knife with brushed finished stainless steel cover, stainless steel scissors, flexible nail file and RAZOR BLADE STAINLESS™ cutting blade. 2 7/8" closed.

No. 778RB  
PETITE



Handsome slim stainless steel vest pocket knife. Includes one RAZOR BLADE STAINLESS™ steel cutting blade and a stainless flexible nail file. The stainless cover of brushed satin finish. 2 7/8" closed.

NUMBER	1-11	12-23	24-71	72 & OVER
340T	7.25	6.50	5.80	5.40
80T	8.00	7.20	6.40	6.00
1650T	20.00	17.50	15.40	15.00
1080T	6.45	5.75	5.20	4.80
250T	12.50	11.25	9.90	9.50
150T	15.00	13.35	11.60	11.20
1250T	10.00	9.00	7.90	7.50
* 876RB	12.00	10.75	9.40	9.00
* 778RB	5.50	4.85	4.20	4.00

\*For Imprinting Charge, See Page 4



**No. 196  
THE GARDENER**



Popular sturdy built Florist Pruner with shackle. Cover of solid grained ivory plastic. 3 7/8" closed.  
Maximum number of lines—2. Number of letters or spaces per line—32.

**No. 182  
BLACK FORESTER**



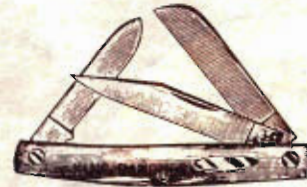
A solid black plastic handled grafting knife for a professional gardener or florist. Full 4" when closed, with one high carbon steel grafting blade.  
Maximum number of lines—1. Number of letters or spaces per line—32.

**No. 882Y  
RANCHER**



Full size premium stock for the biggest man on the ranch or farm. 3 husky blades. Canary yellow unbreakable handle is shielded one side but the other is open for your message. 4" closed.  
Maximum number of lines—2. Number of letters or spaces per line—30.

**No. 835Y  
DUDE**



For the man who wants a compact Utility Knife that has high quality built into each razor sharp blade. Canary yellow handle is practically unbreakable. One side of the knife has a nickel shield for identification — the other side is ready for your message. 3-5/16" closed.  
Maximum number of lines—2. Number of letters or spaces per line—23.

**No. 29  
HANDYMAN**



ULSTER brand Utility Knife. Excellent commercial quality with a screwdriver — wirescraper blade that locks when open, and one fine cutting blade. Full mirror polished. Plastic mahogany handle. Knife, 3 3/4" long when closed.  
Maximum number of lines—2. Number of letters or spaces per line—23.

**No. 163  
ROPE CUTTER**



Big hardwood handle. Heavy gauge cutting blade made of the finest high carbon cutting steel — with hand-glazed, brushed finish — hand honed. Bites through the heaviest hauser with ease. 4 1/2" closed.  
Maximum number of lines—1. Number of letters or spaces per line—39.

**No. 175  
FLORIST**



Florist knife with extra-sturdy Grafting Blade perfectly balanced for amateur or professional use. 3 3/4" plastic mahogany handle.  
Maximum number of lines—2. Number of letters or spaces per line—23.

**No. 708B  
BLACK JACQUE**



Serpentine knife Bladed Clip and Pen. Slim model with solid black plastic cover. 2 3/4" closed.  
Maximum number of lines—1. Number of letters or spaces per line—18.

NUMBER	50-99	100-249	250-499	500 & OVER
196	3.90	3.84	3.70	3.66
182	3.90	3.84	3.70	3.66
882Y	5.90	5.84	5.70	5.66
835Y	5.40	5.36	5.20	5.16
175	3.10	3.04	2.90	2.86
708B	3.90	3.84	3.70	3.66
163	4.40	4.34	4.20	4.16
29	3.40	3.34	3.20	3.16





# NATIONALLY ADVERTISED *Uncle Henry*<sup>®</sup> Guaranteed Against Loss FOR ONE FULL YEAR

EACH KNIFE HAS ITS OWN SERIAL NUMBER. IF YOU LOSE IT, YOU GET ANOTHER ONE FREE, AS EXPLAINED IN THE GUARANTEE-REGISTRATION FORM PACKED WITH EACH KNIFE.

**NO. 285UH  
PRO TRAPPERS**



High-carbon cutlery steel. 2 blades — 1 long clip, an extra long spey. "Fat" Stag-lon<sup>®</sup> handle. 3<sup>3</sup>/<sub>4</sub>" closed.

**NO. 897UH  
SIGNATURE PREMIUM  
STOCK**



Razor blade stainless hand honed. 3 blade premium stock. 3-9/16" closed.

**NO. 885UH  
KING RANCH**



Full 4" husky premium stock, with high carbon stainless steel blades.

**NO. 227UH  
FOLDING BOWIE**



High-carbon stainless steel with heavy clip and boning blade. Genuine form leather sheath. 5<sup>1</sup>/<sub>4</sub>" closed.

**NO. 127UH  
LOCK BLADE  
FOLDING HUNTER**



High-carbon stainless steel with heavy clip blade. Genuine form leather sheath. 5<sup>1</sup>/<sub>4</sub>" closed.

**NO. 171UH  
PRO HUNTER**



Extra heavy high carbon cutlery steel. Solid brass guard and rivets. Heavy genuine leather sheath and "piggyback" hone stone. Precise control. 9<sup>1</sup>/<sub>2</sub>" overall, 5<sup>1</sup>/<sub>4</sub>" blade.

Each Uncle Henry Knife Gift Boxed

NUMBER	1-11	12-23	24-71	72 & OVER
285UH	10.00	9.00	7.90	7.50
897UH	11.00	9.75	8.40	8.00
885UH	12.00	10.75	9.40	9.00
227UH	15.00	13.25	11.60	11.20
127UH	13.00	11.75	10.00	9.60
171UH	25.00	21.75	18.40	18.00

Sorry -- No Imprint

4P

## No. US-2 SAMPLER

4-11/16" long Sampling Knife. 1 Long Stainless Steel Blade, full mirror polished — Sanitary Delrin Handles — Brass Linings. Packed one dozen to chipboard box. 40 letters per line—2 lines per side, Weight per dozen, approx. 14 oz.  
**US-2 ULSTER COMMERCIAL QUALITY SAMPLER (Full mirror polished)**



## No. US-5 SAMPLER

5-3/4" long Sampling Knife. 1 Long Stainless Steel Blade, full mirror polished — Sanitary Delrin Handles — Brass Linings. Packed one dozen to chipboard box. 52 letters per line—2 lines per side, Weight per dozen, approx. 2 lbs.  
**US-5 ULSTER COMMERCIAL QUALITY SAMPLER (Full mirror polished)**

NUMBER	50-99	100-249	250-499	500 & OVER
US-2	2.80	2.74	2.60	2.56
US-5	3.00	2.94	2.80	2.76



4P

# THE BEST PROFESSIONAL QUALITY SCHRADE WALDEN SAMPLERS

These knives are hand made to meet the strictest specifications. Every blade is made of High-Carbon Stainless Steel, heat treated and tempered to insure its edge holding quality. The hand fine glazed finish and hand honing and edging insures its keen cutting quality for those who want the "WORLD'S FINEST SAMPLER KNIVES."

## NOW... THE ONLY SAMPLERS WITH THE REVOLUTIONARY NEW RAZOR BLADE STAINLESS™ BLADES

*Cut Keener! Last Longer!*

### SS700 CITRUS SAMPLER

4½" long RAZOR BLADE STAINLESS SAMPLER  
Unbreakable Marine Pearl handle. Brass linings,  
Nickel Silver bolsters. Maximum imprint — 33  
letters per line, 2 lines per side.



### SS102 INSPECTOR'S SAMPLER

4-11/16" long RAZOR BLADE STAINLESS SAMPLER  
Ivory Delrin handle. Guaranteed against breakage.  
Brass linings. Maximum imprint — 40 letters per line,  
2 lines per side.



### SS105 PROFESSIONAL SAMPLER

5¾" long RAZOR BLADE STAINLESS SAMPLER  
Ivory Delrin handle. Guaranteed against breakage.  
Brass linings. Maximum imprint — 52 letters per line,  
2 lines per side.



NUMBER	50-99	100-249	250-499	500 & OVER	
SS700	5.40	5.34	5.20	5.16	
SS102	4.40	4.34	4.20	4.16	
SS105	4.90	4.84	4.70	4.66	4P
NUMBER	300-499	500-999	1000 & OVER		
* 778RB	4.50	4.30	4.20		
* 876RB	9.50	9.30	9.20		3P

\*Illustrated On Page No. 1

INDIVIDUAL GIFT BOXES—20¢ each for samplers. 18¢ each for individual leatherette boxes #103. MAILERS EXTRA

All shipments FOB factory.

Both Sides Stamped Add per knife	50-99	100-249	250-499	500 & over
	.44	.28	.20	.16

Quantities from 24-49 pieces with same stamping or engraving — add a "setup" charge of \$20.00 to prices listed for 50 pieces.

